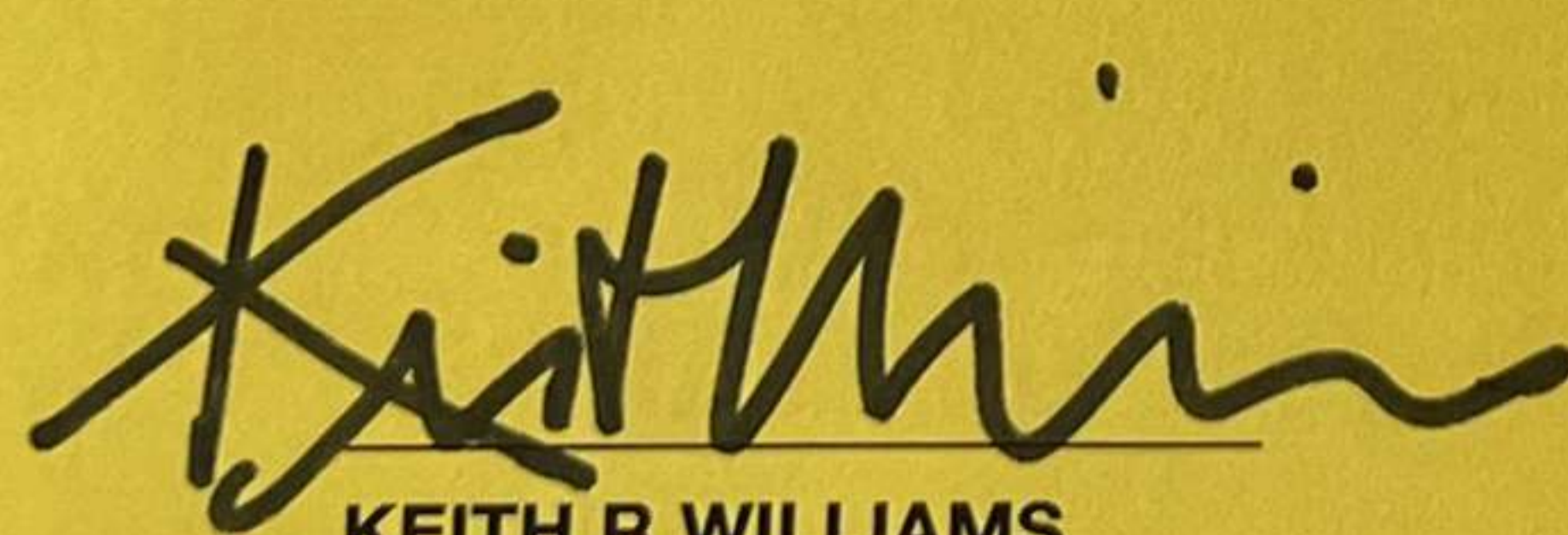


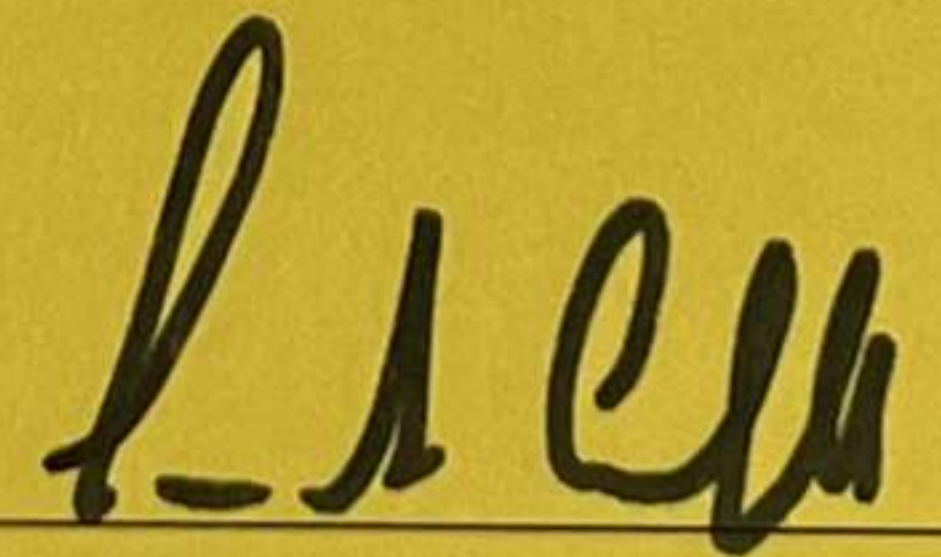
Special mention

On 15 June 2005 Yaniv-Jacobs were awarded a special mention in Light at the End of the Tunnel, an international open ideas competition to transform central London's network of Victorian viaducts

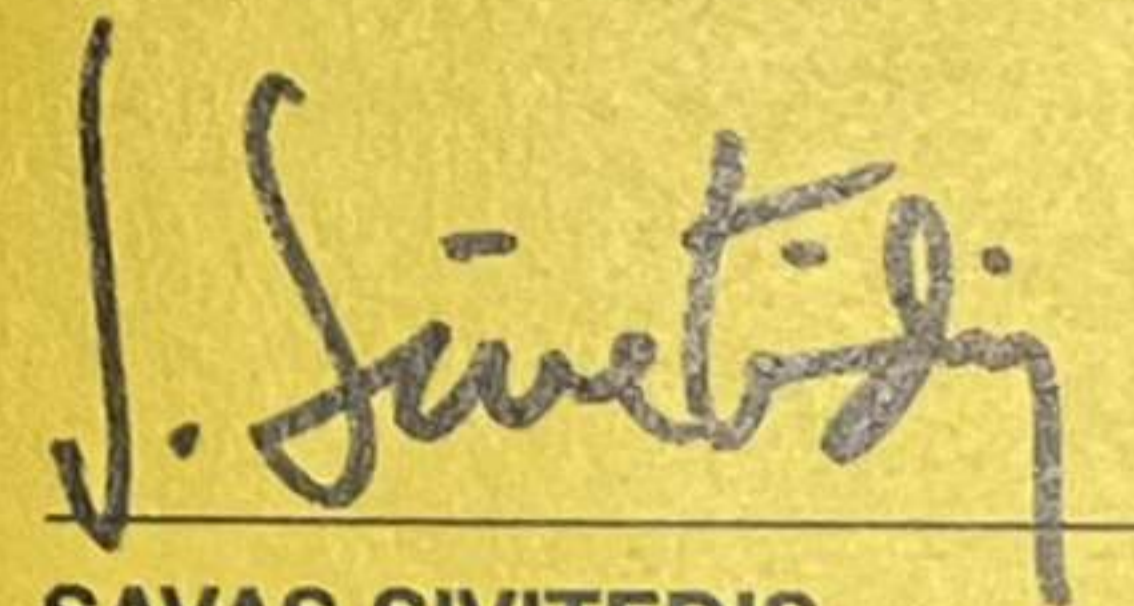
LIGHT AT THE END OF THE TUNNEL



KEITH R WILLIAMS
RIBA ADVISOR,
CHAIR OF JUDGING PANEL



IAN CAMPBELL
DIRECTOR,
SPACIA



SAVAS SIVITEDIS
DIRECTOR, CROSS
RIVER PARTNERSHIP



The first floor above the railway is a continuous pedestrian promenade on which people stroll in their leisure, in groups, accompanied by the family, in business, and part of the public life of the urban realm. The open urban character can be linked to previous schemes.



WIND-PROOF EDGE

SEPARATION

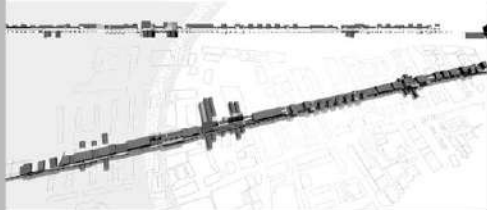
EXTERNAL EFFECTS (WIND, SOUND, LIGHT)



THE CONTROL AND OF WIND

WIND-PROOF EDGE OF SEPARATION

WIND-PROOF EDGE OF SEPARATION

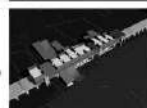
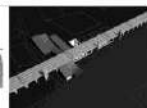
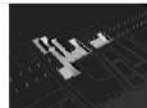
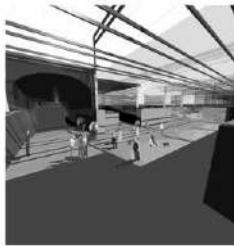
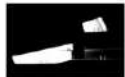


With the viaduct, the urban realm is transformed into a public space, a place where people can stroll in their leisure, in groups, accompanied by the family, in business, and part of the public life of the urban realm. The open urban character can be linked to previous schemes.



VIADUCT MIXER 2: STRATEGY

Several features along the viaduct are related to potential programme food points. In these locations, the potential of reaching the generic city is amplified in terms of being able to access it under its existing programme and needs. To demonstrate the form and a more integrated of these points, which make use of landscape that have to be seen from the urban design view.



VIADUCT MIXER 3: ARCHITECTURAL SCENARIO

