

Lines Alive Residence / Jacobs Yaniv Architects



Curated by **Hana Abdel**

[Share](#)

HOUSES • HERZLIYA, ISRAEL

Architects: [Jacobs Yaniv Architects](#)

Area: **1000 m²**

Year: **2020**

Photographs: [Amit Geron](#)

Manufacturers: [Asi Lerner](#), [Bulthaup](#), [Ganim & Shoshanim](#), [Habitat](#), [HeziBank](#), [Mody](#), [Parquet Chen](#), [Tollman's](#), [Tzemer](#), [Yair Doram](#), [fervital](#)

Landscape Design: [Itamar Landscape Architecture Ltd.](#)

[MORE SPECS](#)

[Save](#)



Text description provided by the architects. Lines Alive is a holiday home for a family of 5. The house, which is seemingly straight-lined and straightforward, beholds some understated features and functions. The straight and full footprint of the house is derived from the plot limitations and a certain amount of meters requested by the clients.



Save


Projects


Images


Products


Folders

Feed



A design language was developed based on these limitations. The linear beam surrounding the façade beholds custom-made light fittings, custom-made shutters, custom-made sun shades, a steel plaque with the address cut through, and a pergola. The facades are horizontally split into several materials in order to reduce the sense of scale. They are made of bare concrete, steel, and a special render that has little stones in it. This particular render is regularly used in our studio in order to ground the building and make it look and feel as if is part of the garden with natural materials and textures. This particular render is also very practical to maintain, it does not look too sterile and it is easy to clean.



Save


Projects


Images


Products


Folders

Feed



In certain areas in Israel, there are fruit bats that are extremely difficult to deal with and that are protected animals. They spend the nights in the beautiful and big trees and spit fruit on anything in their way, creating terrible stains and dirt and sometimes reversible damage. As soon as the rough render is used, the spit is both more difficult to see and cleans easily.



The interiors of the house are extremely well and warmly lit with daylight and views of the garden. The choice of materials was specially selected, involving a combination of hand-crafted materials, materials, and hard-lined details which together always add depth to design.

Save

Projects

Images

Products

Folders

Feed



Project gallery

Save

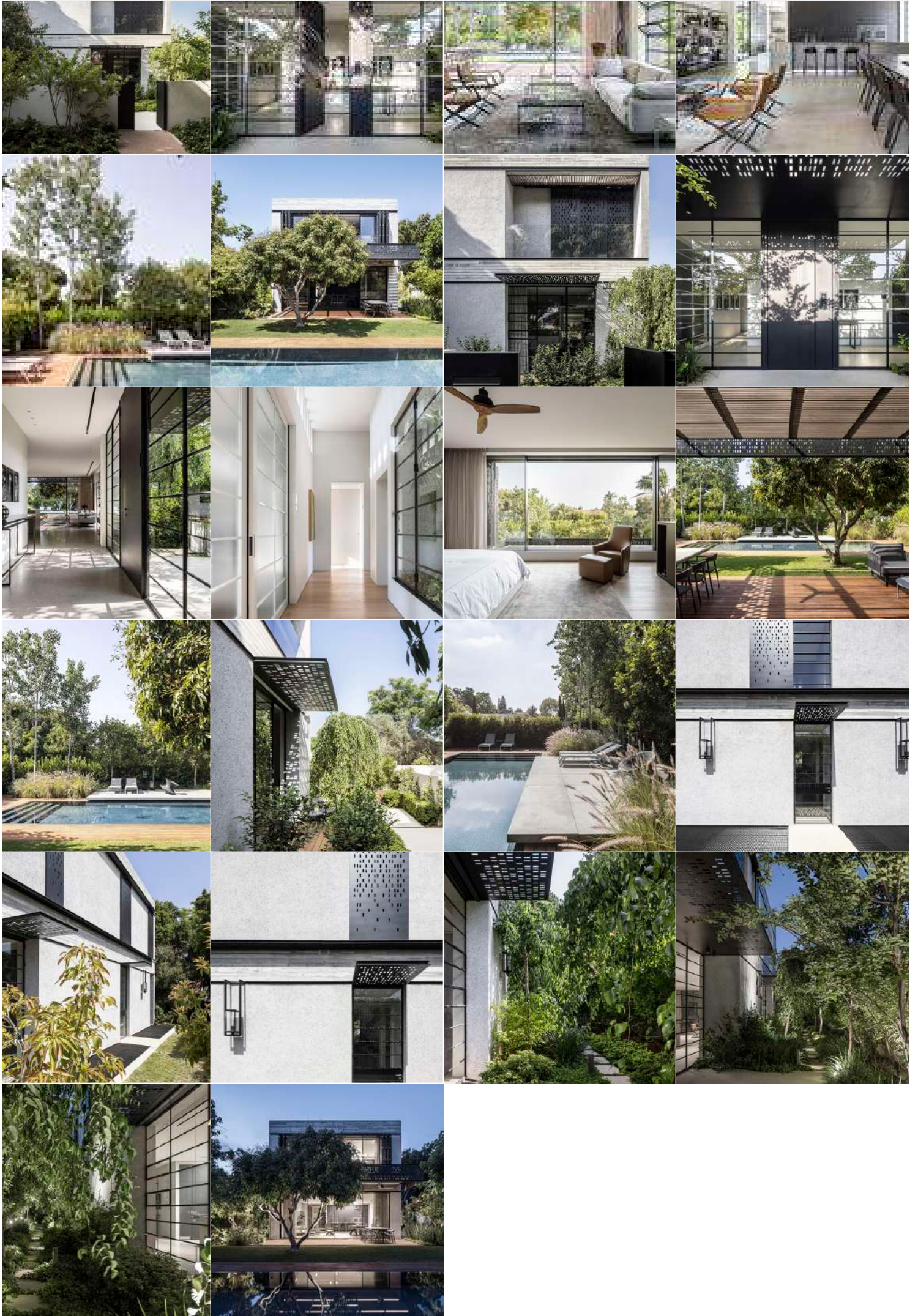

Projects



Images


Products


Folders

Feed



 Share

Save

 Projects

 Images

 Products

 Folders

Feed